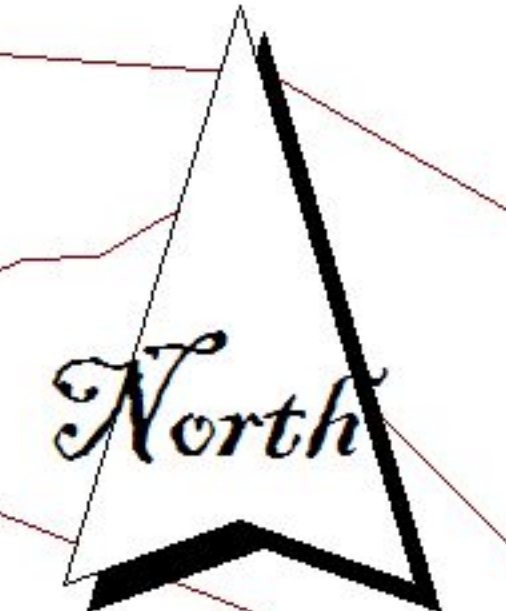
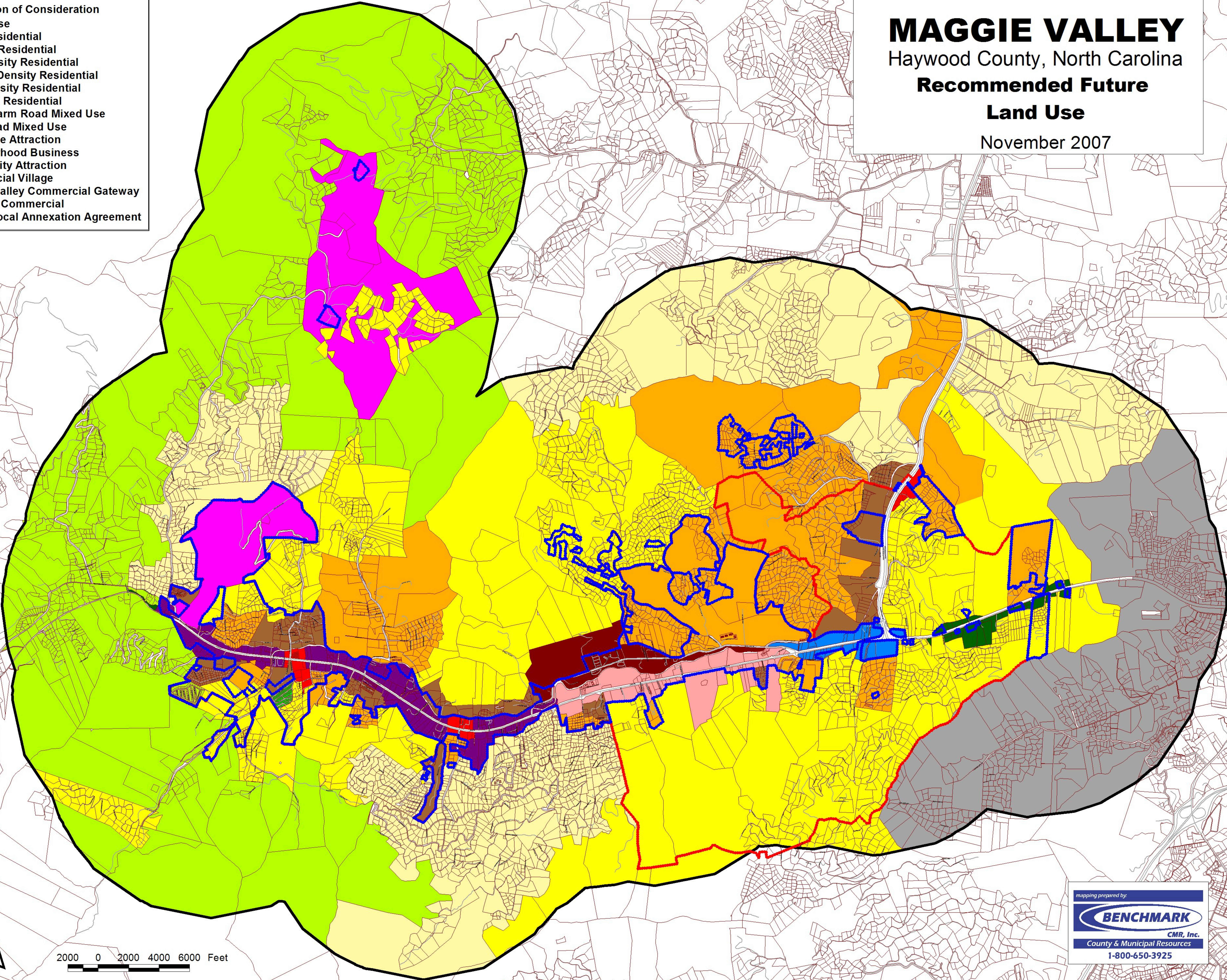


- Town Limit
- ETJ
- Resolution of Consideration
- Future Land Use**
- Rural Residential
- Existing Residential
- Low Density Residential
- Medium Density Residential
- High Density Residential
- Seasonal Residential
- Moody Farm Road Mixed Use
- Soco Road Mixed Use
- Mixed Use Attraction
- Neighborhood Business
- Community Attraction
- Commercial Village
- Maggie Valley Commercial Gateway
- Open Air Commercial
- Part of Local Annexation Agreement

**MAGGIE VALLEY**  
 Haywood County, North Carolina  
**Recommended Future  
 Land Use**  
 November 2007



2000 0 2000 4000 6000 Feet

mapping prepared by  
**BENCHMARK**  
 CMR, Inc.  
 County & Municipal Resources  
 1-800-650-3925